

BROOKLINE HIGH SCHOOL EXPANSION

**SCHOOL COMMITTEE MEETING
MAY 13, 2021**



AGENDA

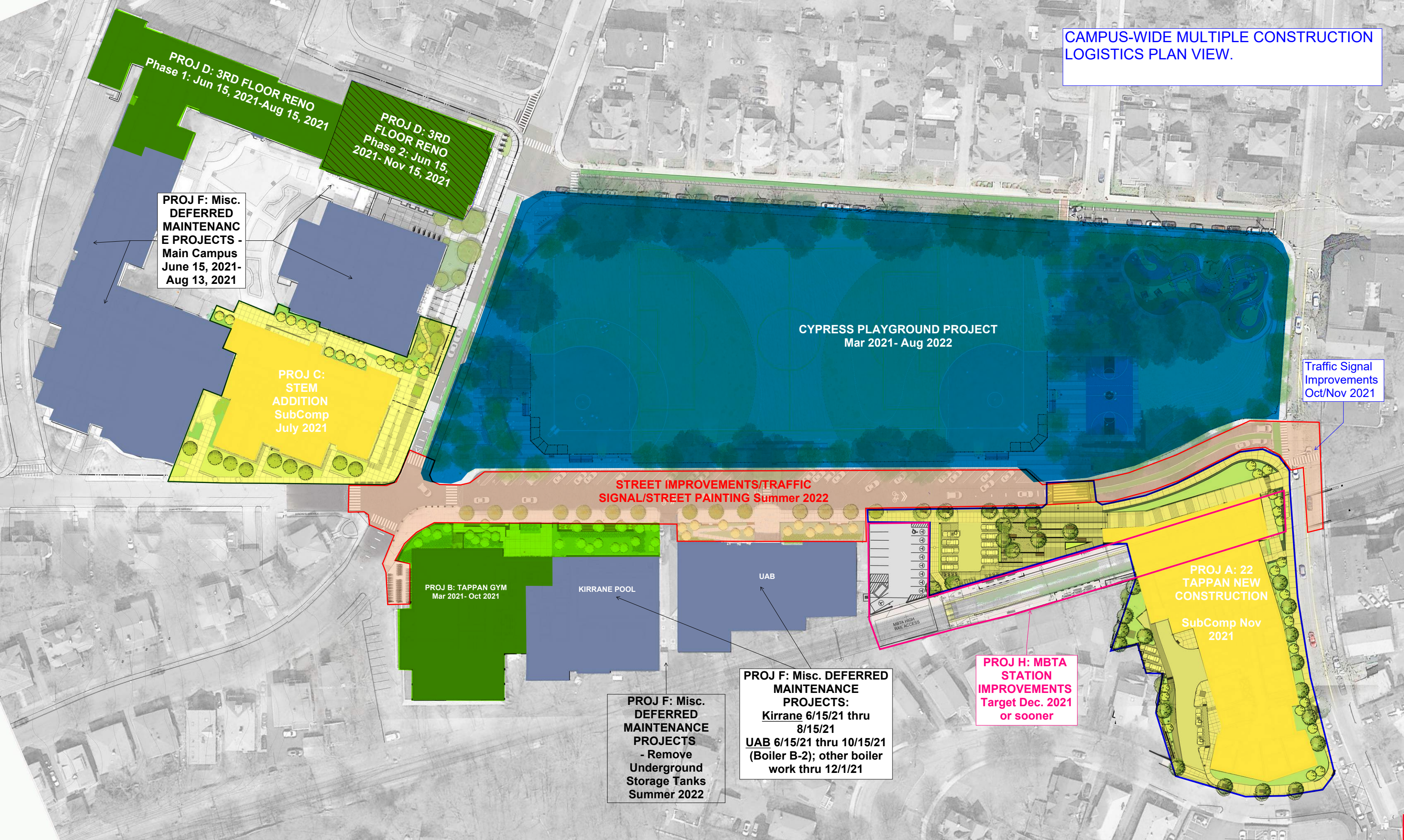
- **INTRODUCTION**
- **SCHEDULE**
- **PROJECT UPDATE**

BROOKLINE HIGH SCHOOL EXPANSION

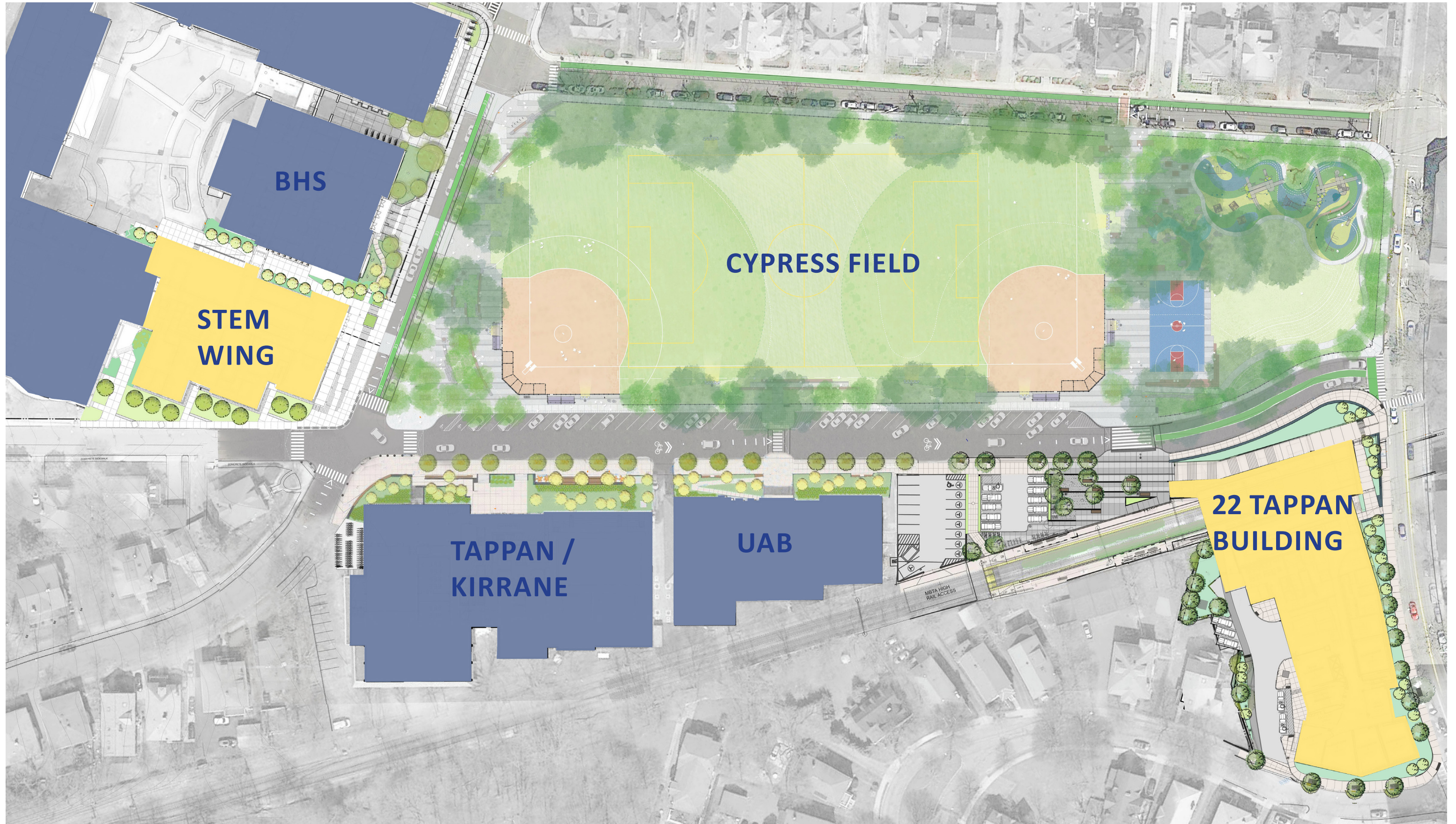


BROOKLINE HIGH SCHOOL EXPANSION – Cypress Playground

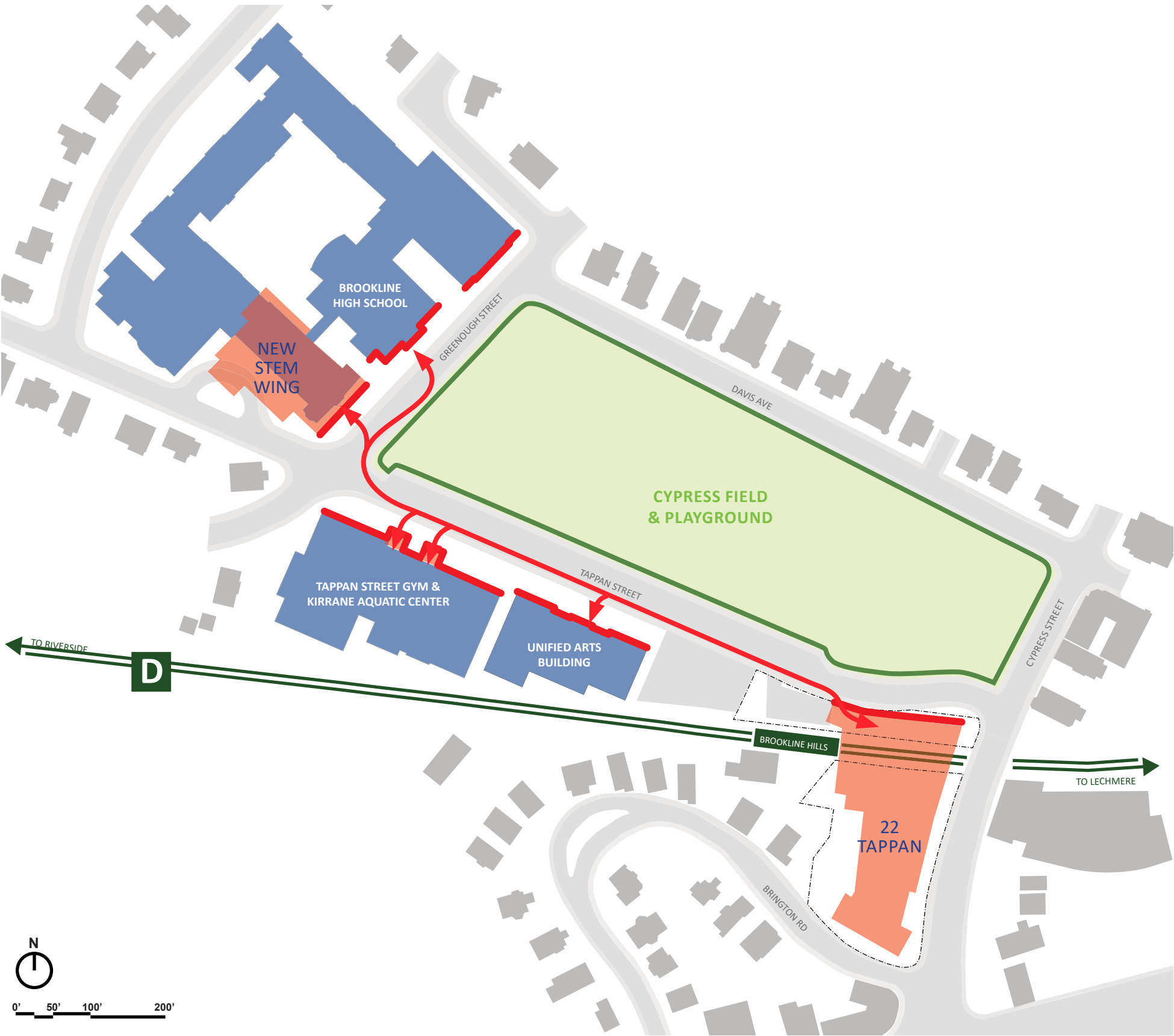




CAMPUS PLAN



GOAL: CREATE A UNIFIED CAMPUS



Bring 9th graders to rest of campus

- World Languages (Main Building)
- Electives (Unified Arts Building /Main Building)
- Health & Fitness (Tappan)

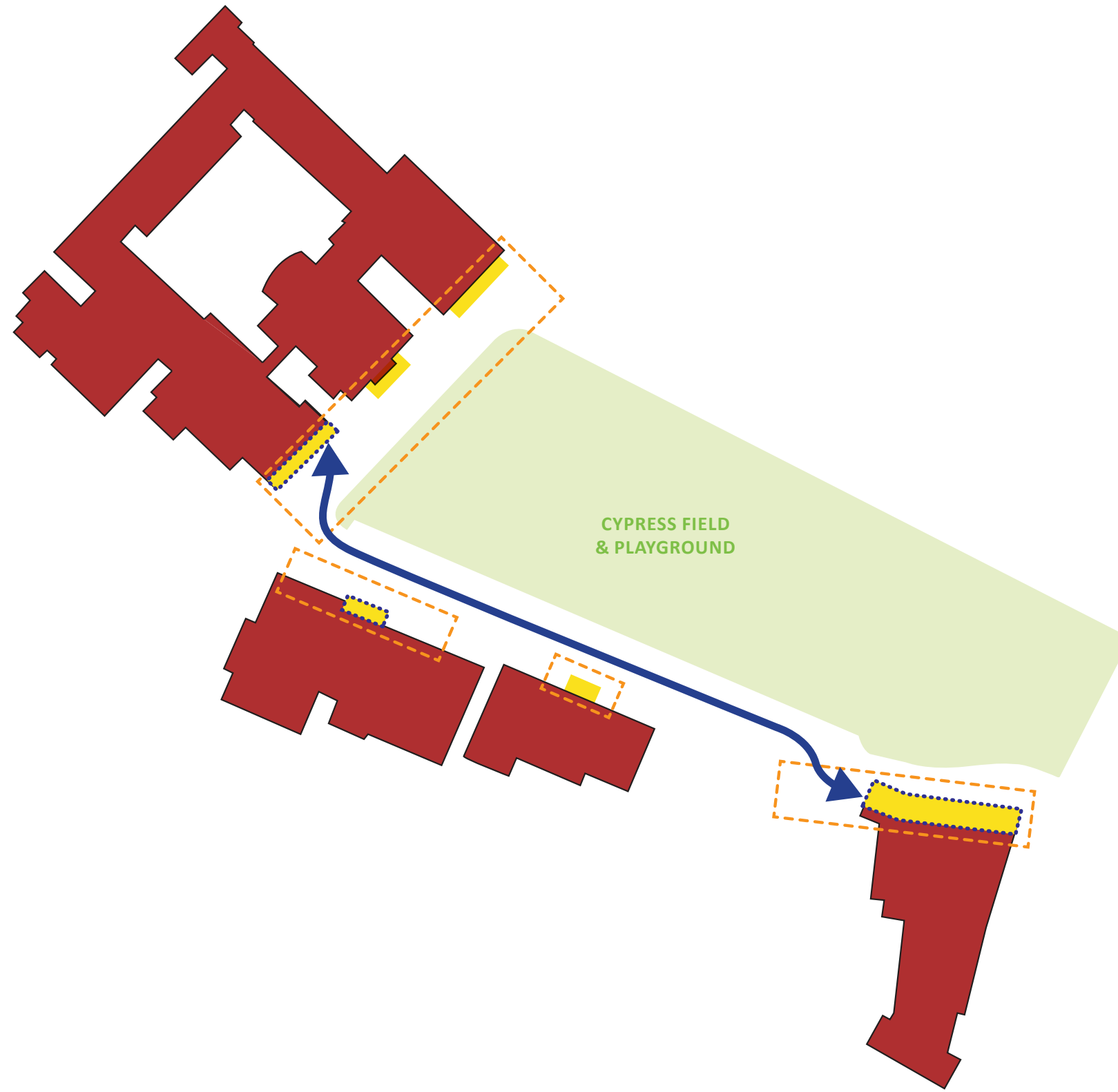
Bring 10-12th graders to 22 Tappan

Optional courses:

- Creative Writing
- Social & Racial Justice
- Advanced Placement (AP) Physics
- Multi-use White Box Space
 - Drama, Dance, Music
 - Guest Speakers for other Classes
 - Interdisciplinary Work

NEW, WELCOMING “FRONT PORCHES” UNIFY BHS CAMPUS

FRONTING A CIVIC GREEN



Strengthen sense of civic institution around Cypress Field

- STEM Wing: Create gracious New Entry to Main Building campus
- 22 Tappan: Lean-in toward Cypress Field

STUDENTS HANGING OUT ON GREENOUGH STREET AFTER SCHOOL



MAKING A LARGE SCHOOL FEEL SMALLER



Existing picnic table on 3rd floor of the High School

Engage All Students

Interdisciplinary classrooms organization

Flexible classroom seating and teaching arrangements

Front porch on 22 Tappan and STEM

See and be seen at Cafeteria

Spaces for Collaboration

*Breakout spaces adjacent to labs and classrooms
extend the teaching environment into the hallway*

Places for Serendipitous Interaction

*A range of spaces from grand to intimate for students
to study and gather*

Adult Presence on Each Floor

*Dispersed Admin offices and faculty offer opportunities
for student faculty engagement*

Find Your Niche

*Variety of places to gather, study in groups, seek help,
get engaged*

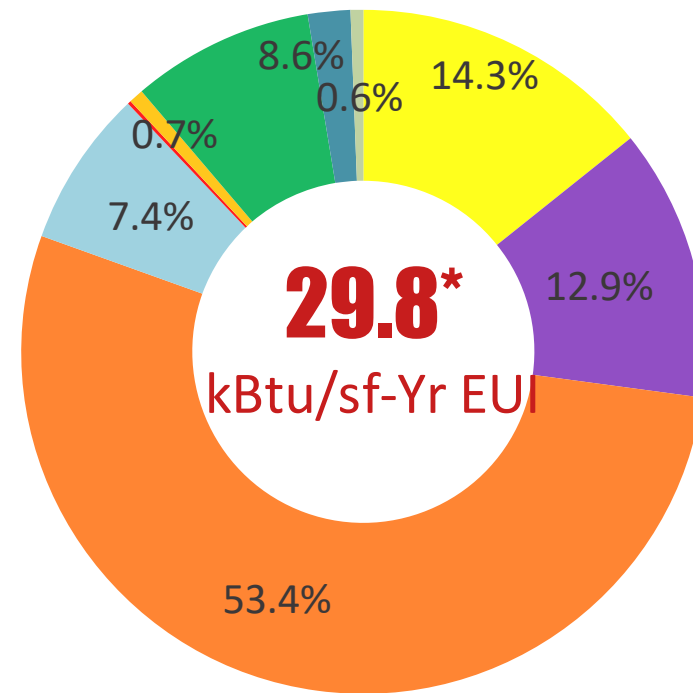


Picnic Table in the new STEM Wing

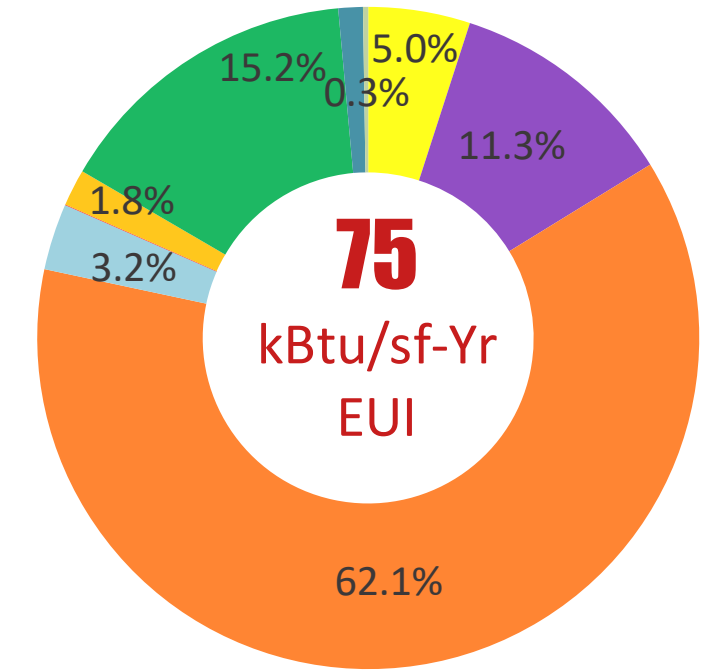
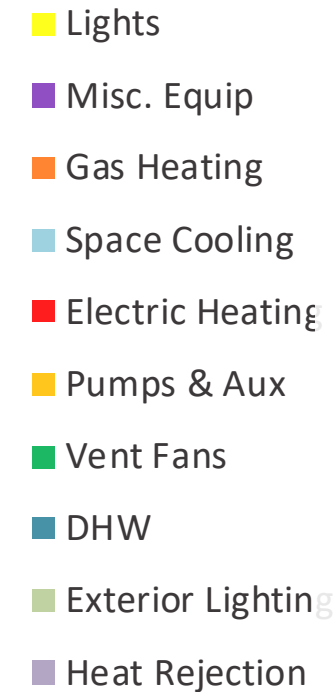
PROJECT SUSTAINABILITY



LEED CERTIFIABLE



22 TAPPAN

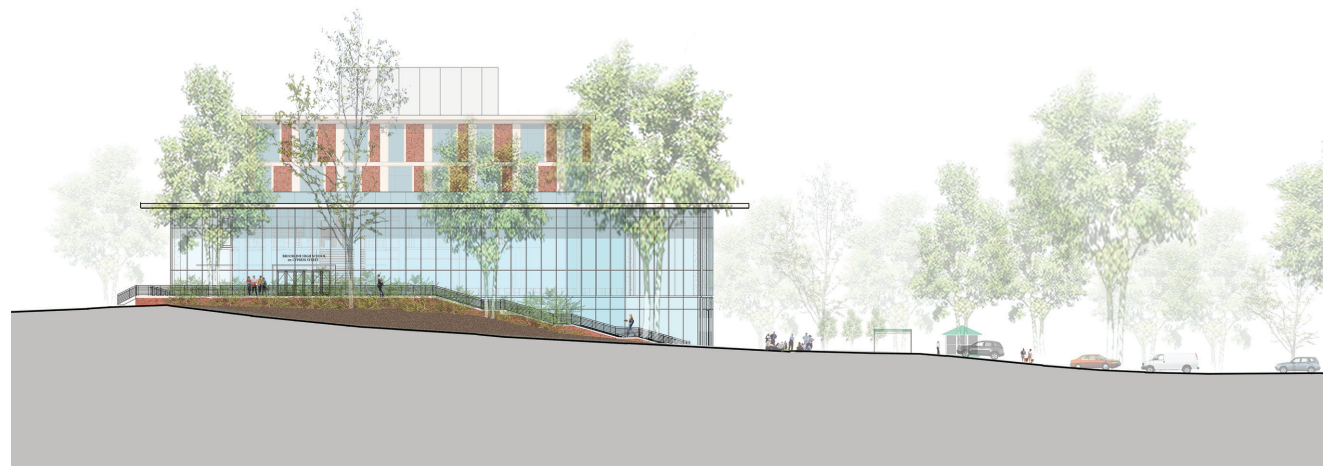


STEM WING

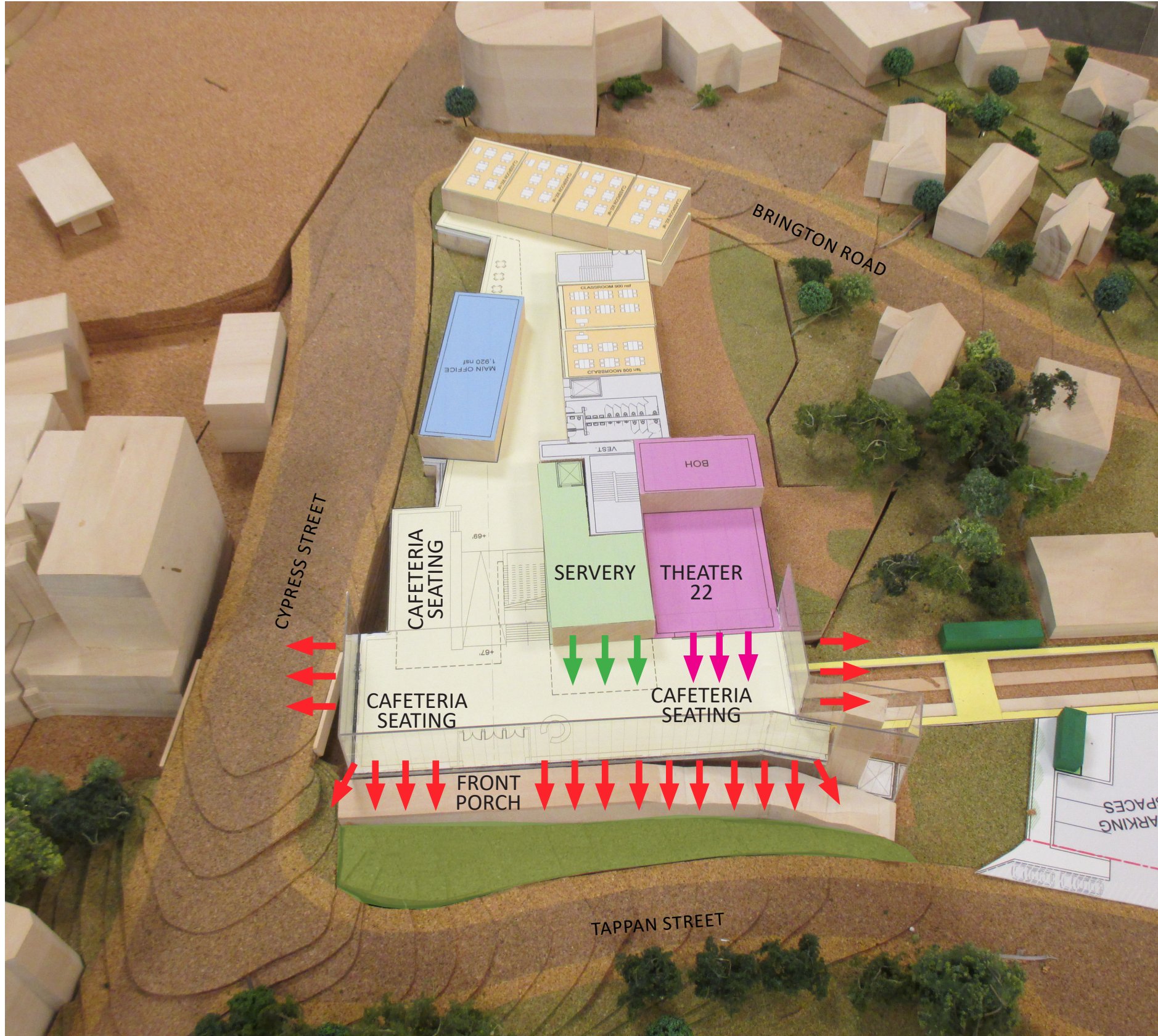
KEY ENERGY CONSERVATION MEASURES:

- PERIMETER FIN TUBE FOR OFF HOURS HEATING REDUCES ENERGY COSTS
- PARTIAL COOLING REDUCES SUMMER ENERGY USE
- ABUNDANT NATURAL LIGHT
- HIGH EFFICIENCY VAV MECHANICAL UNITS WITH ENERGY RECOVERY CAPABILITY
- HIGHLY INSULATED WALLS AND ROOF AND HIGH PERFORMANCE GLASS
- PV READY ROOF ALONG BRINGTON ROAD

22 TAPPAN ST

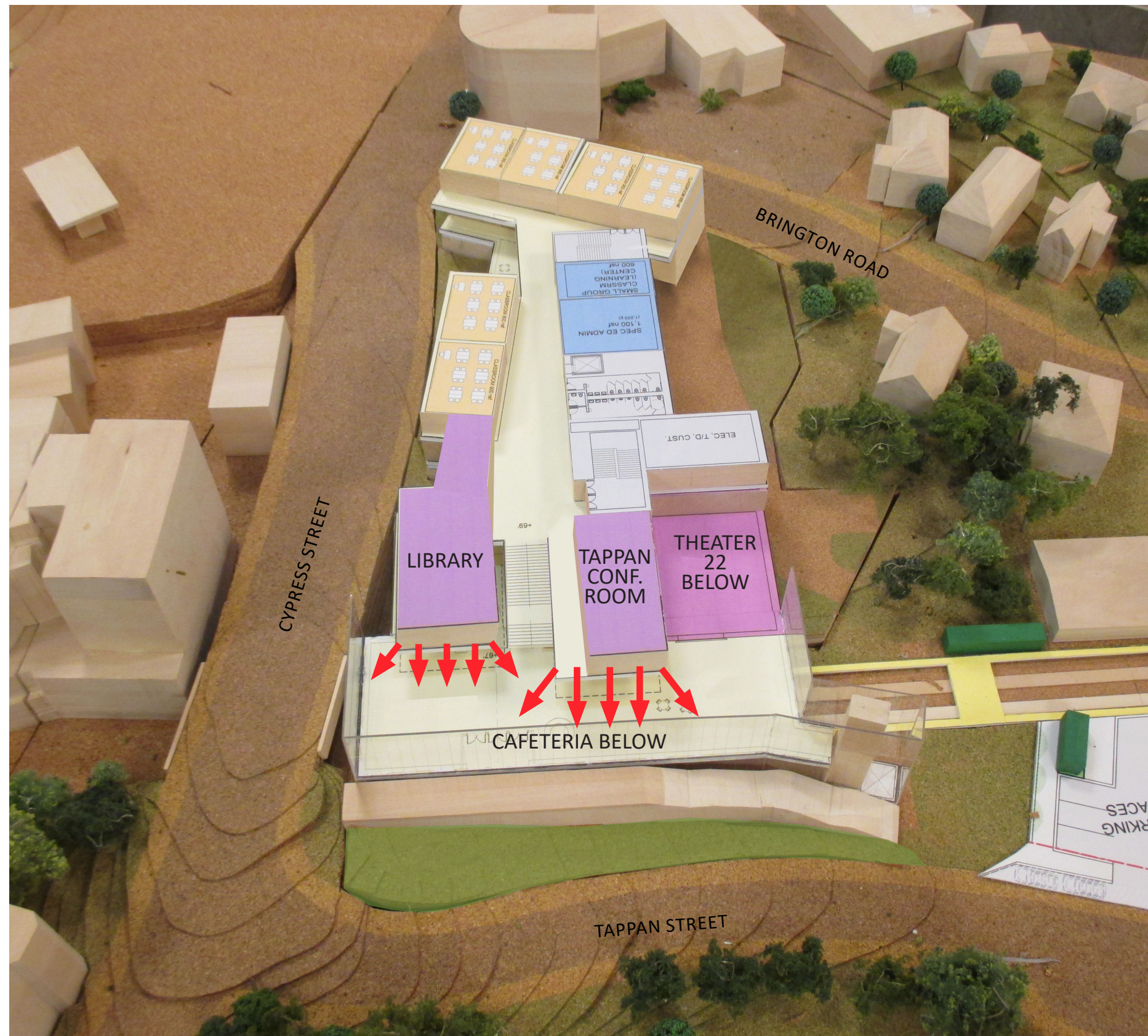


22 TAPPAN: MAJOR PUBLIC SPACES FRONTING CYPRESS FIELD (LEVEL 1)



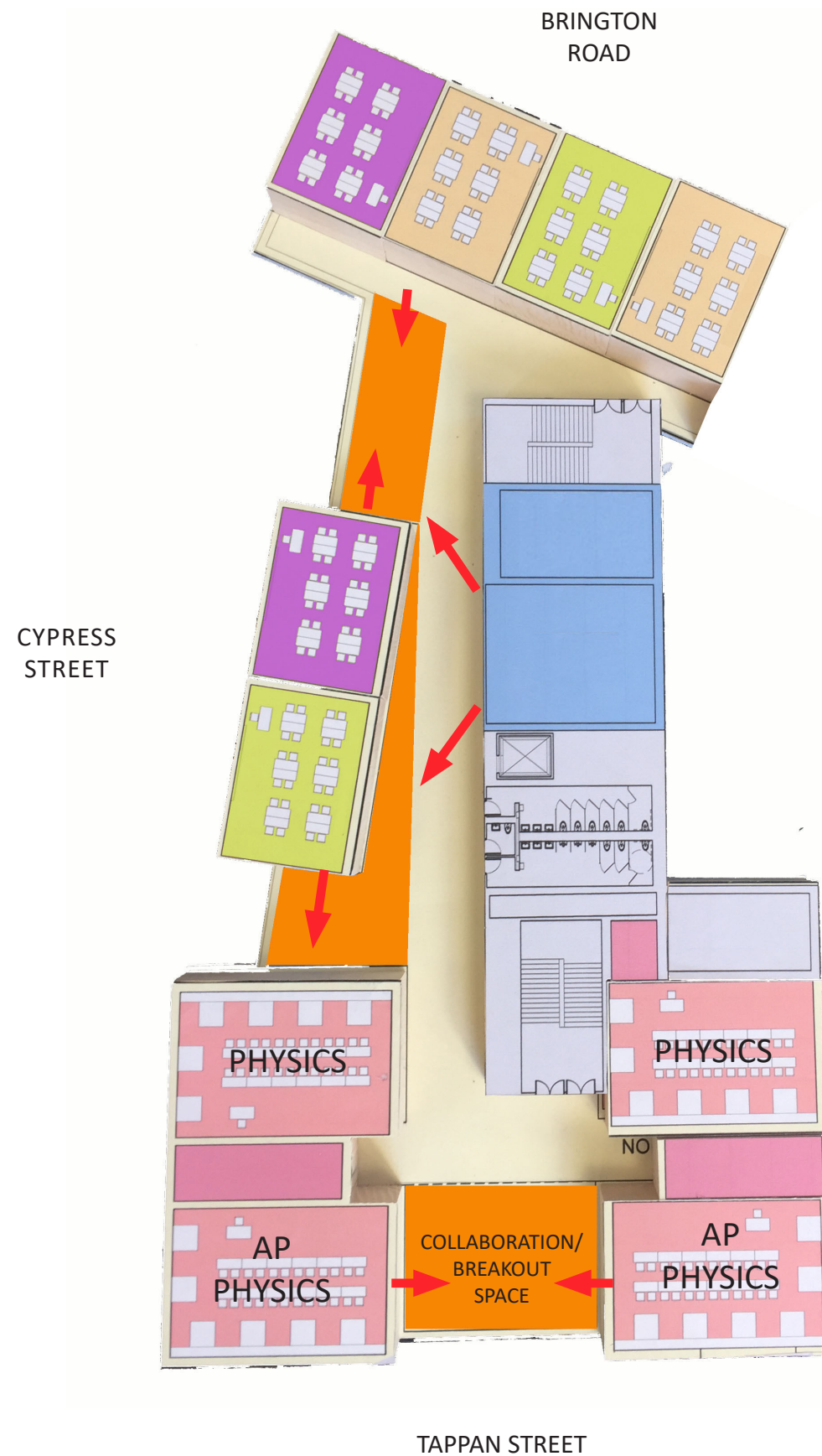
LEVEL 1

22 TAPPAN: MAJOR PUBLIC SPACES FRONTING CYPRESS FIELD (LEVEL 2)



LEVEL 2

22 TAPPAN: INTERDISCIPLINARY CLASSROOM ORGANIZATION

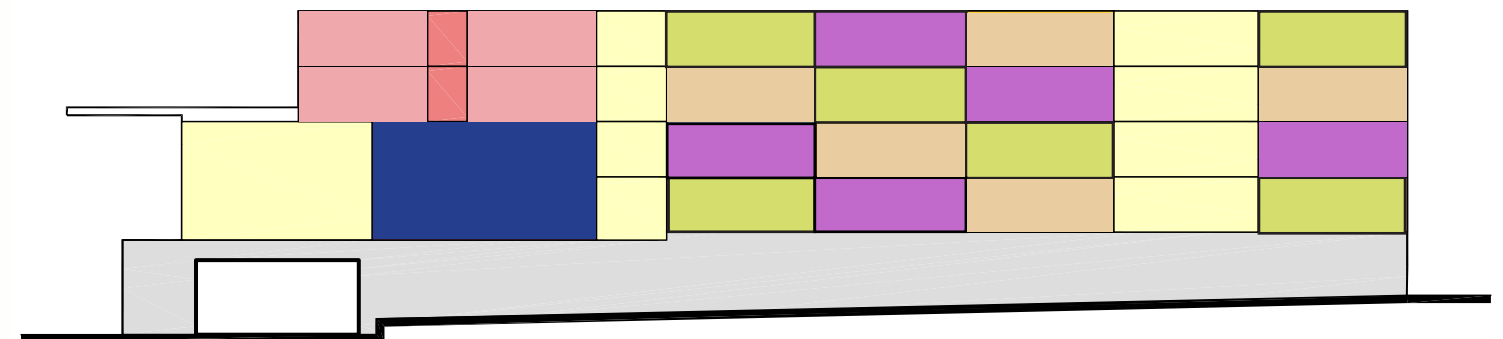


PURPOSE BUILT PROGRAM

- PHYSICS
- GUIDANCE / SPEC ED.

FLEXIBLE USE PROGRAM

- MATH
- SOCIAL STUDIES
- ENGLISH
- COLLABORATION SPACE



LEVEL 3



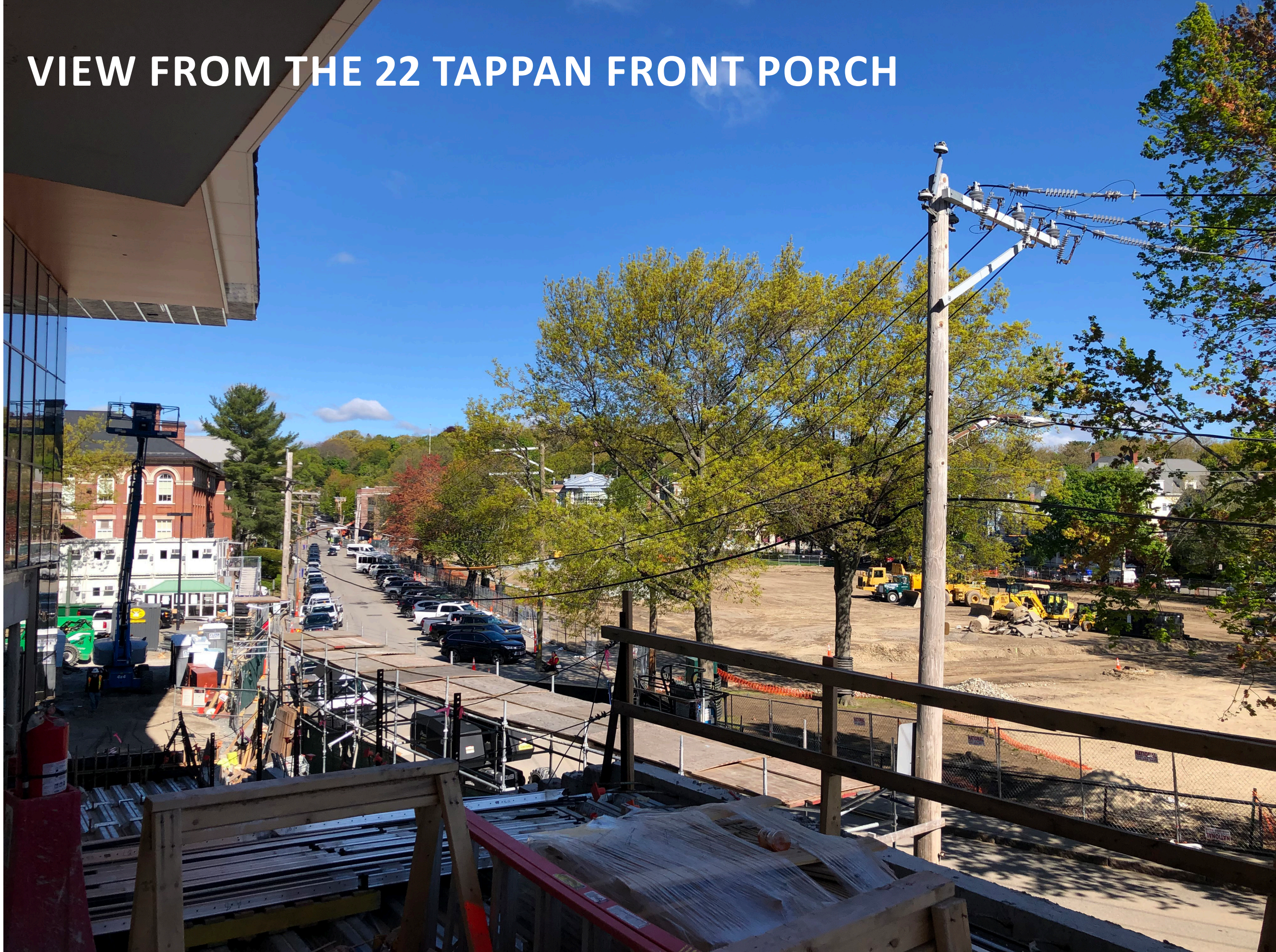
TAPPAN STREET "FRONT PORCH"



TAPPAN STREET "FRONT PORCH"



VIEW FROM THE 22 TAPPAN FRONT PORCH



22 TAPPAN - FRONT PORCH



22 TAPPAN RENDERING - FRONT PORCH





22 TAPPAN BUILDING

CAFETERIA



22 TAPPAN BUILDING

SOUTH COLLABOR



22 TAPPAN BUILDING

SOUTH COLLABORATION



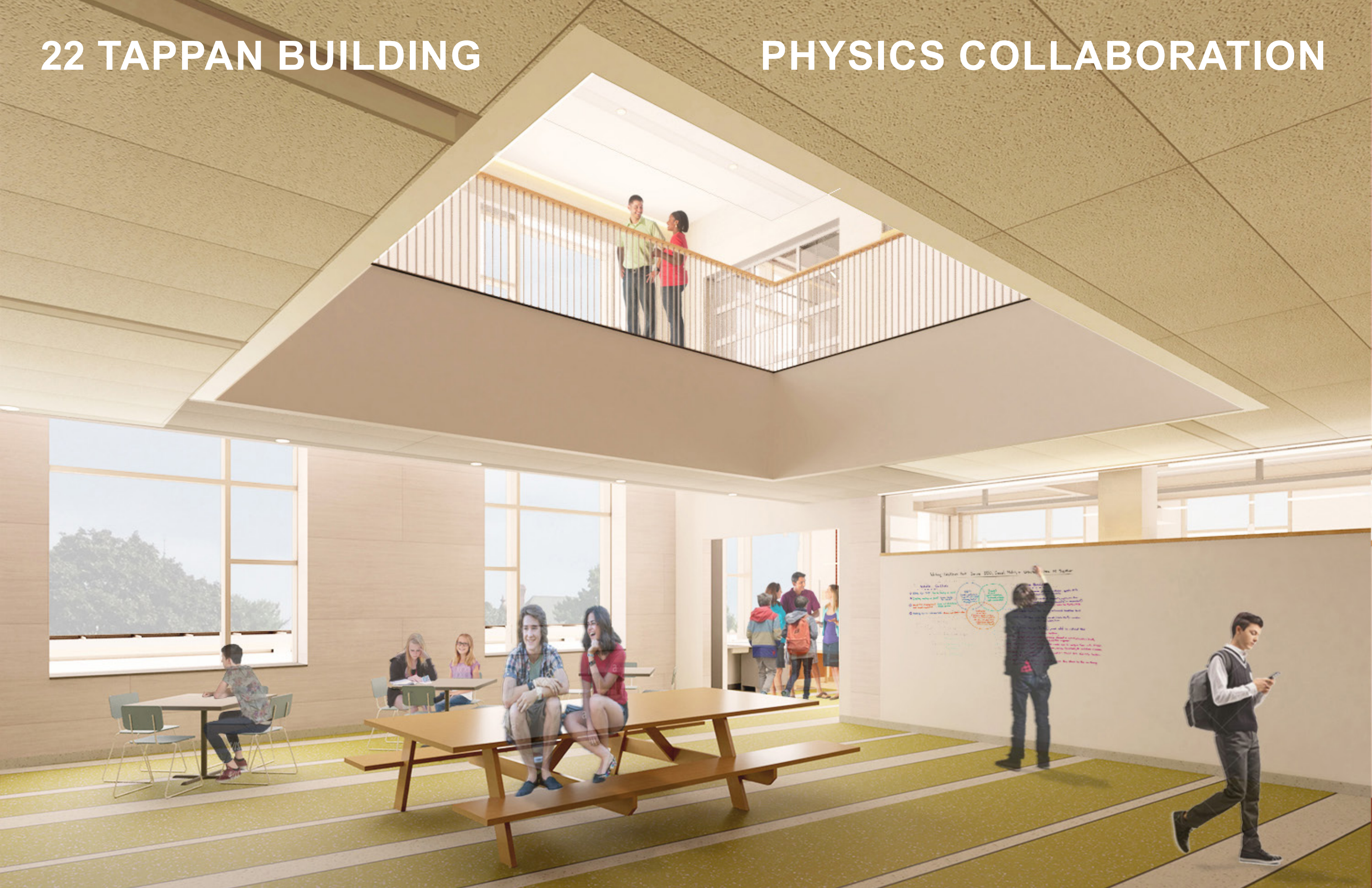
22 TAPPAN BUILDING

PHYSICS COLLABORATION



22 TAPPAN BUILDING

PHYSICS COLLABORATION



22 TAPPAN BUILDING

1ST FLOOR HALLWAY



22 TAPPAN BUILDING

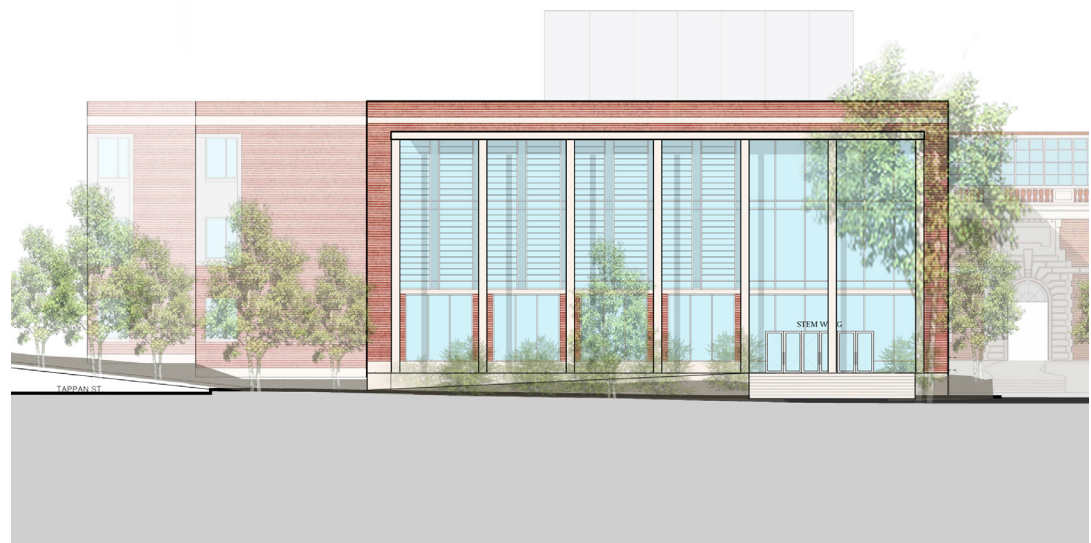
1ST FLOOR HALLWAY







STEM WING



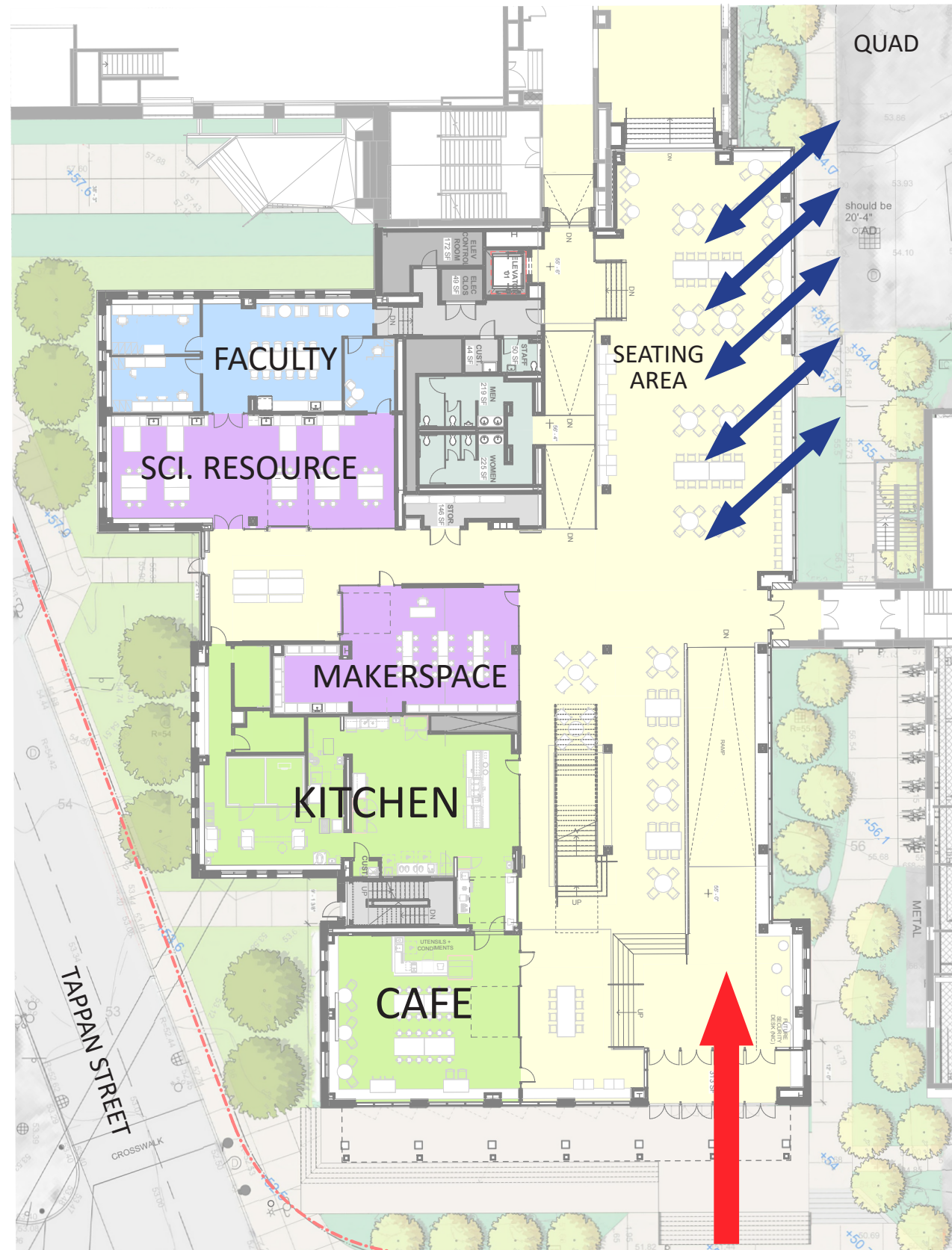
STEM WING - MAY 2021



STEM WING RENDERING



STEM WING: CREATE A MAJOR HIGH SCHOOL BUILDING ENTRANCE



LEVEL 1

MAJOR
NEW
ENTRY

A major building entrance sized to accommodate student preference for entry here:

- 20' wide entry hallway
- Direct access to staircase connecting floors 2 & 3
- Accessible entrance

Connecting to the Quad

- New doorway to the Quad
- Abundant glazing for views to the Quad
- Gathering / seating area adjacent to the Quad

Expanding Cafeteria Seating

- Seating area facing the Quad expands cafeteria capacity at peak lunch hours

Showcase Culinary Arts

- The Culinary Arts Cafe is connected directly to the 1st floor seating area and major new entry



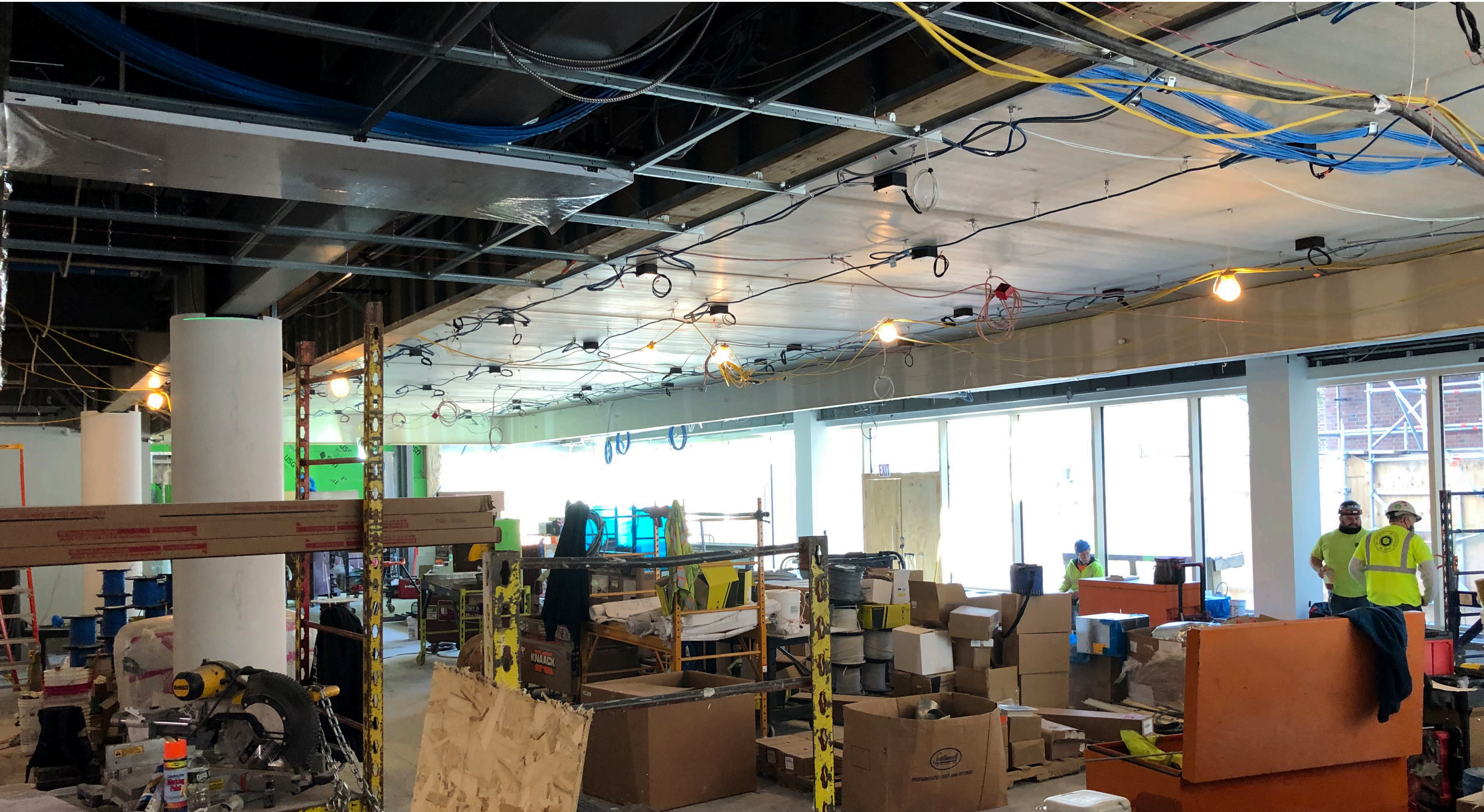
STEM WING VIEW TOWARDS CULINARY ARTS CAFE



STEM WING VIEW TOWARDS CULINARY ARTS CAFE



1ST FLOOR SEATING AREA WITH VIEWS TO THE QUAD



1ST FLOOR SEATING AREA WITH VIEWS TO THE QUAD



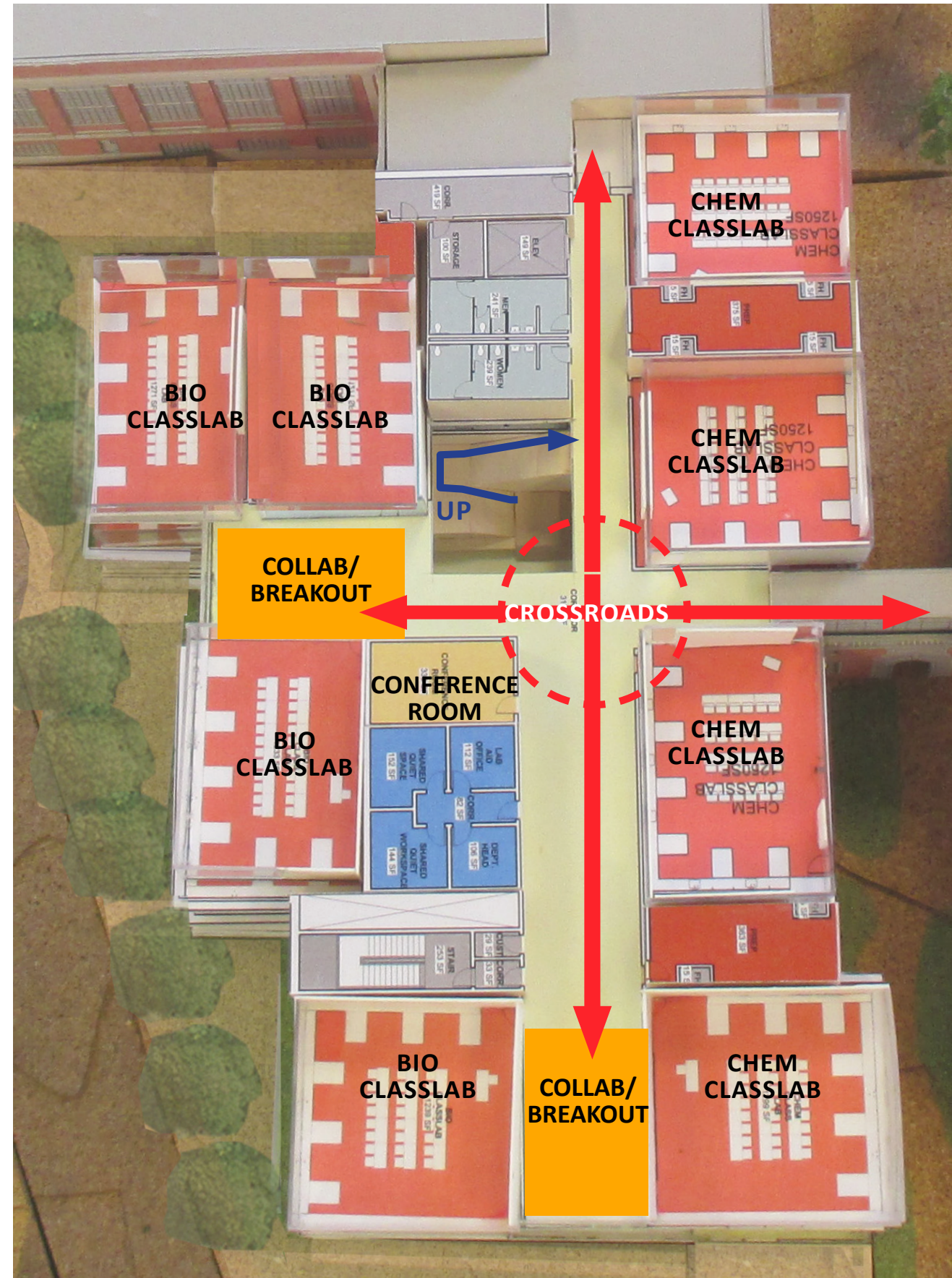
1ST FLOOR COLLABORATION SPACE



1ST FLOOR COLLABORATION SPACE



STEM WING: A NEW HUB FOR SCIENCE



Science Crossroads:

- Views to the exterior
- Collaboration spaces at the end of the hallway
- Flex Classroom on Level 2

Interdisciplinary:

- Biology & Chemistry on each floor

LEVEL 3



VIEW TOWARDS NORTH COLLABORATION (2ND FLOOR)



VIEW TOWARDS NORTH COLLABORATION (2ND FLOOR)



VIEW OF GRAND STAIR & SOUTH COLLABORATION (3RD FLR)



VIEW OF GRAND STAIR & SOUTH COLLABORATION (3RD FLR)



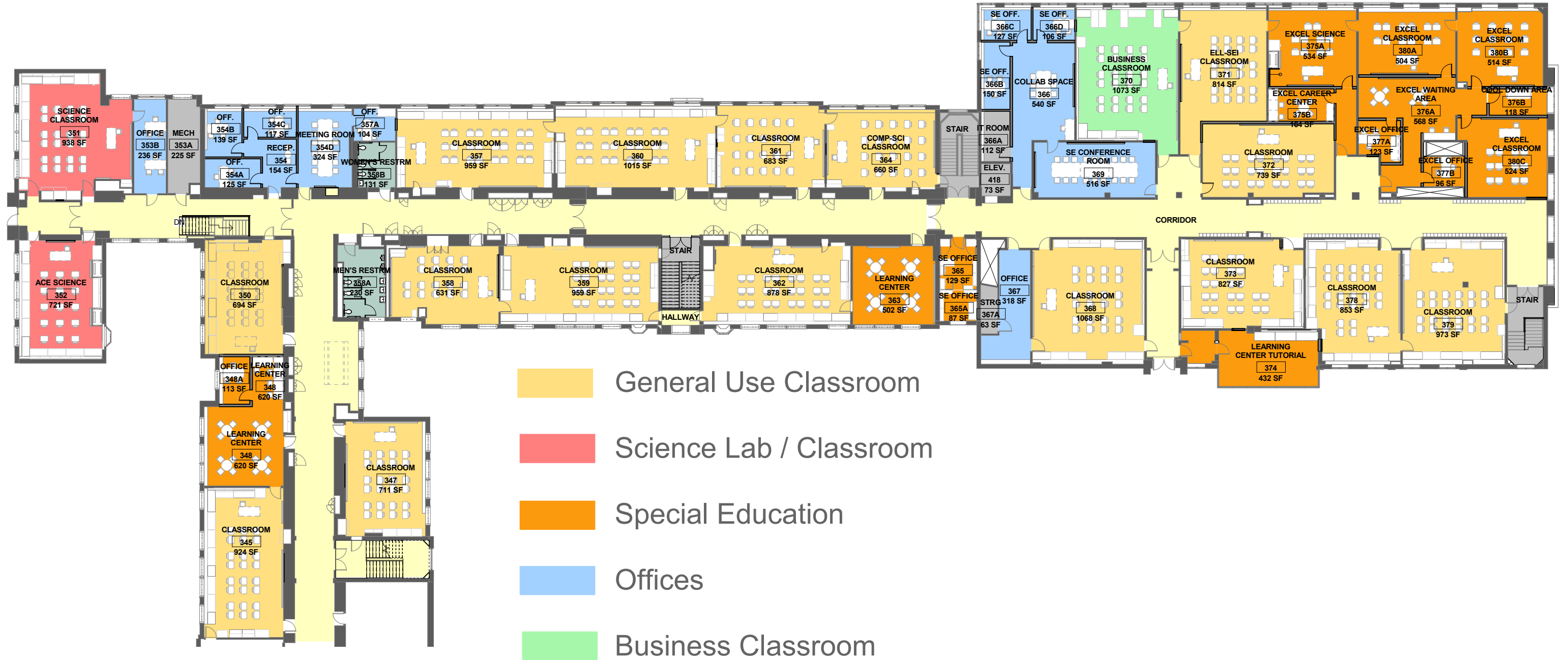
BIOLOGY LAB / CLASSROOM



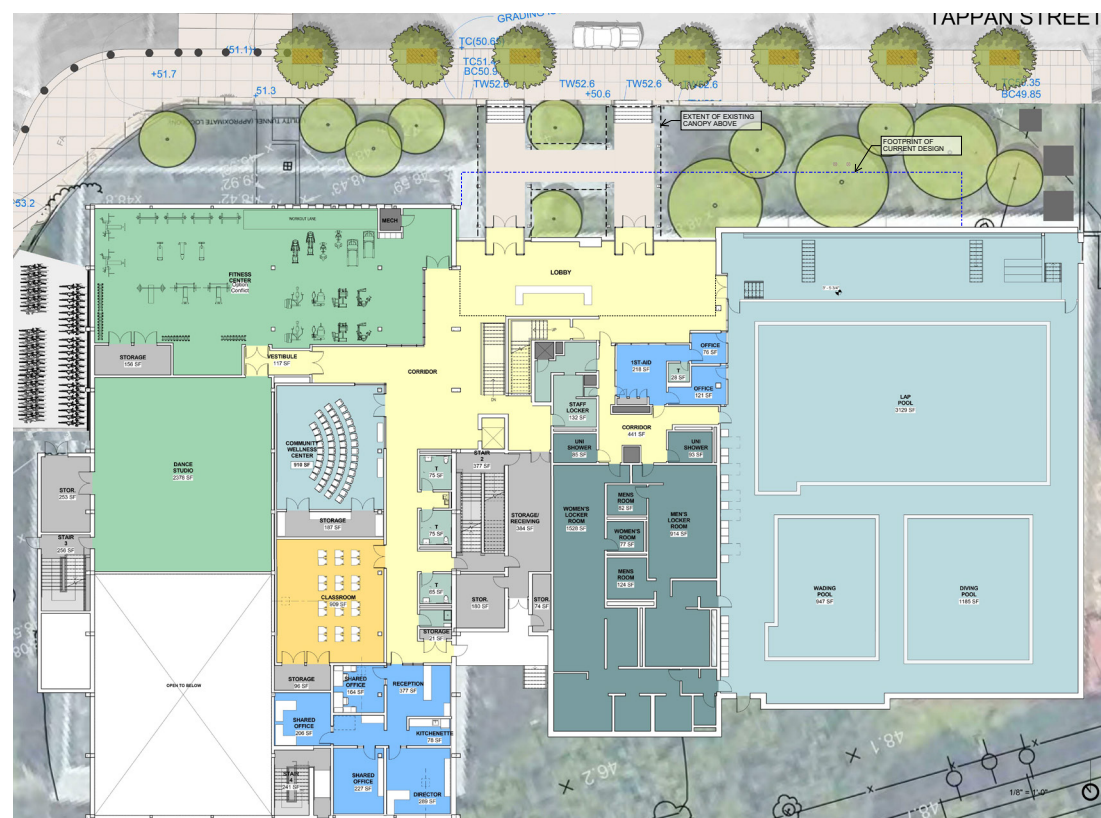
BIOLOGY LAB / CLASSROOM



3RD FLOOR RENOVATION SCOPE



TAPPAN RENOVATION



CONSTRUCTION PHOTO: VIEW TOWARDS GRAND STAIR



TAPPAN GYM RENDERING: VIEW TOWARDS GRAND STAIR



CONSTRUCTION PHOTO: VIEW TOWARDS FITNESS



TAPPAN GYM RENDERING: VIEW TOWARDS FITNESS



CONSTRUCTION PHOTO: VIEW TOWARDS KIRRAN



TAPPAN GYM RENDERING: VIEW TOWARDS KIRRANE



CULINARY ARTS CAFE & KITCHEN



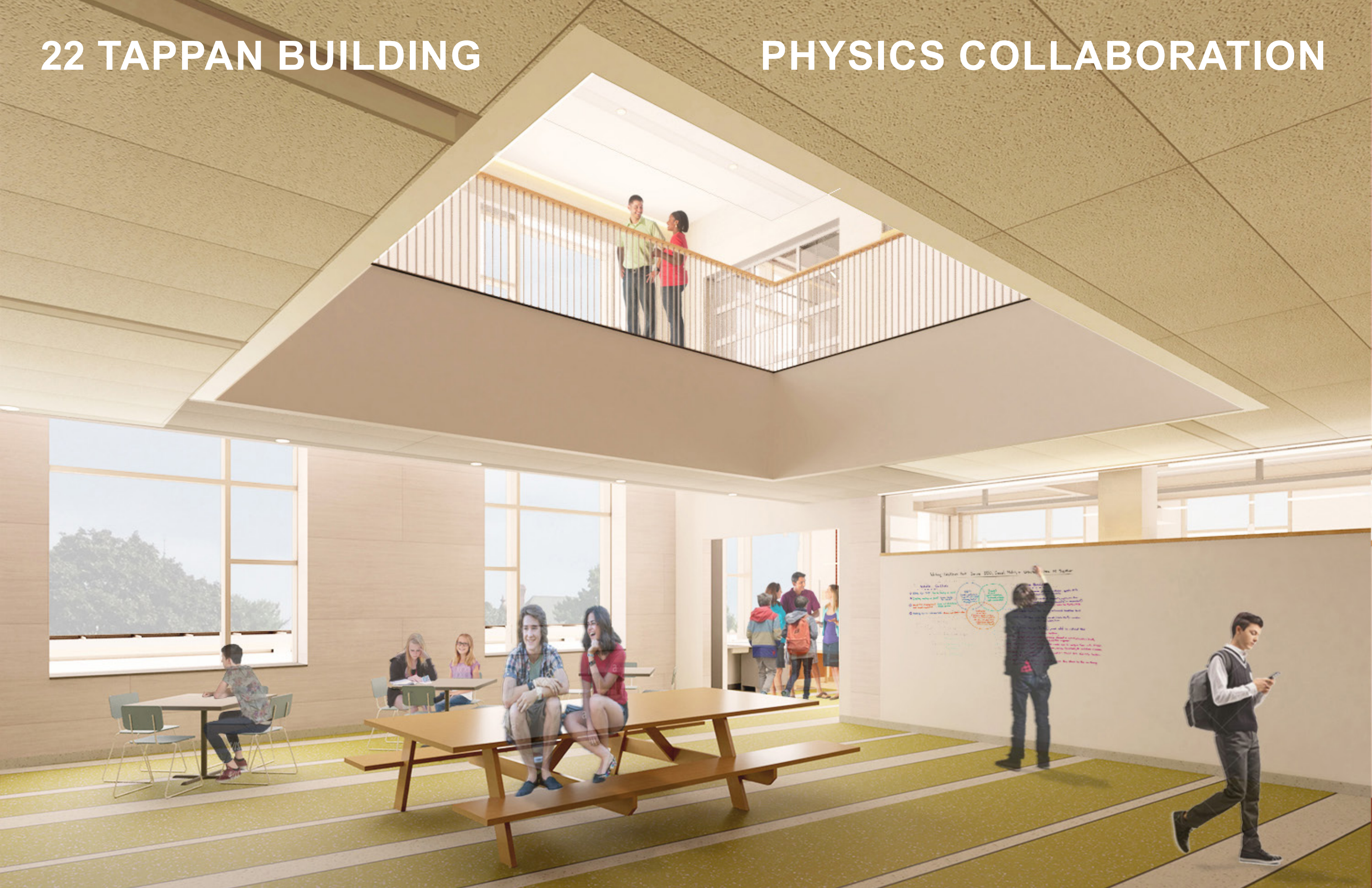
22 TAPPAN BUILDING

PHYSICS COLLABORATION



22 TAPPAN BUILDING

PHYSICS COLLABORATION



BIOLOGY LAB / CLASSROOM



END

